

Model 989

Application

- Wall mount
- Low profile
- Concealed wiring
- Shipping weight: 2 lbs. (0.9 kg)

Features

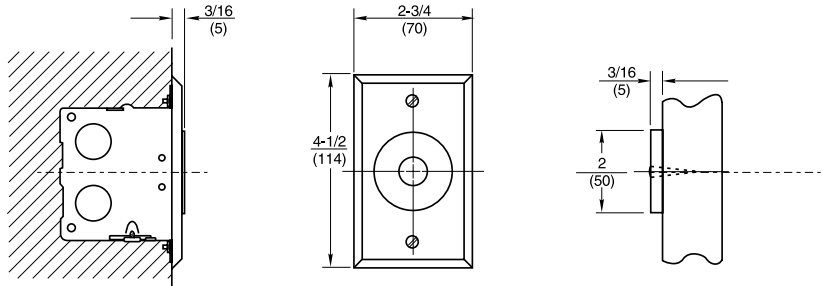
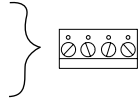
- Total projection: 7/16" (11mm)
- Mounting requirements: 2" x 4" x 2-1/2" (51 x 102 x 64mm) outlet box
- Wall must be properly reinforced and outlet box adequately fastened
- 2 year limited warranty

Compliance

- ANSI/C00011

Electrical Data

- Voltage and current:
  - 120VAC, 60Hz., .020 amp
  - 24VAC/DC, 60Hz., .020 amp
  - 12VDC, .040 amp
- For 50-55 lbs. of holding force, specify voltage
  - 120VAC, 60Hz .017 amp
  - 24VAC, 60Hz .080 amp
  - 24VDC, .068amp
  - 12VDC, .180amp



Application

- Wall mount
- Low profile
- Concealed wiring
- Shipping weight: 2 lbs. (0.9 kg)

Features

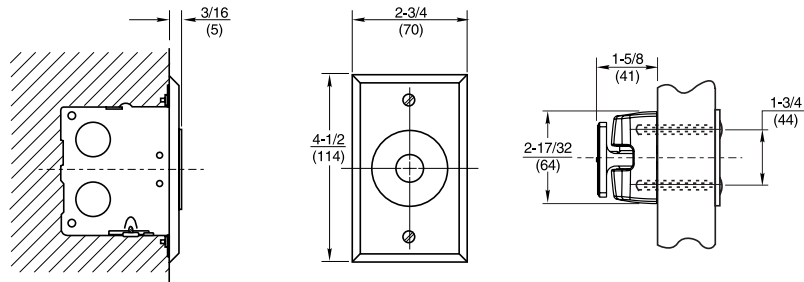
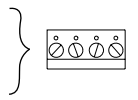
- Total projection: 1-13/16" (46mm)
- Mounting requirements: 2" x 4" x 2-1/2" (51 x 102 x 64mm) outlet box
- Wall must be properly reinforced and outlet box adequately fastened
- 2 year limited warranty

Compliance

- ANSI/C00011

Electrical Data

- Voltage and current:
  - 120VAC, 60Hz., .020 amp
  - 24VAC/DC, 60Hz., .020 amp
  - 12VDC, .040 amp
- For 50-55 lbs. of holding force, specify voltage
  - 120VAC, 60Hz .017 amp
  - 24VAC, 60Hz .080 amp
  - 24VDC, .068amp
  - 12VDC, .180amp



Experience a safer  
and more open world